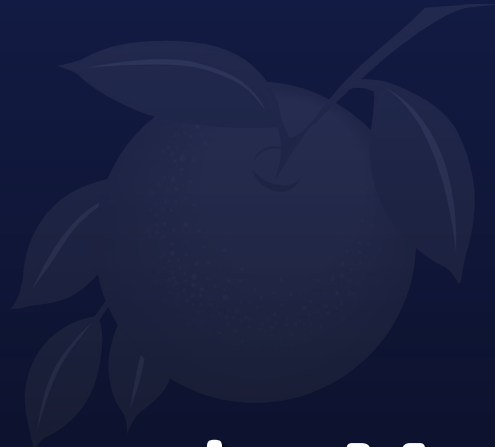


Waterleigh Neighborhood Park



Community Meeting

Orange County Parks & Recreation Division



September 21, 2022



Community Meeting Agenda

- **Introductions & Welcome**
- **Site Overview**
- **Recreation Amenities**
- **Park Timeline**
- **Next Steps**
- **Questions & Comments**



Community Meeting Agenda

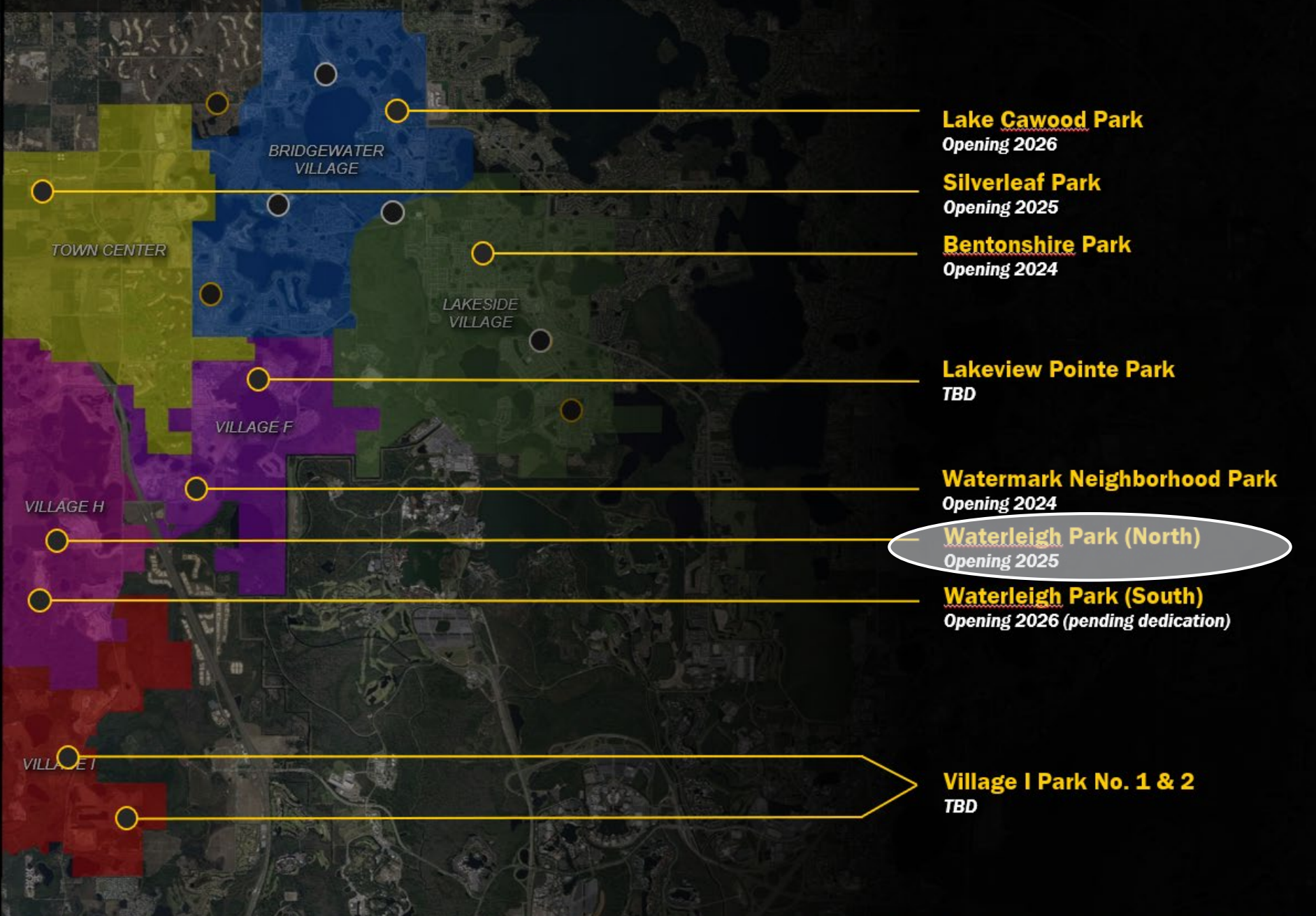
- **Introductions & Welcome**
- Site Overview
- Recreation Amenities
- Park Timeline
- Next Steps
- Questions & Comments



Community Meeting Agenda

- Introductions
- **Site Overview**
- Recreation Amenities
- Park Timeline
- Next Steps
- Questions & Comments

Planned Parks



Lake Cawood Park
Opening 2026

Silverleaf Park
Opening 2025

Bentonshire Park
Opening 2024

Lakeview Pointe Park
TBD

Watermark Neighborhood Park
Opening 2024

Waterleigh Park (North)
Opening 2025

Waterleigh Park (South)
Opening 2026 (pending dedication)

Village I Park No. 1 & 2
TBD



Site Overview – Area Map



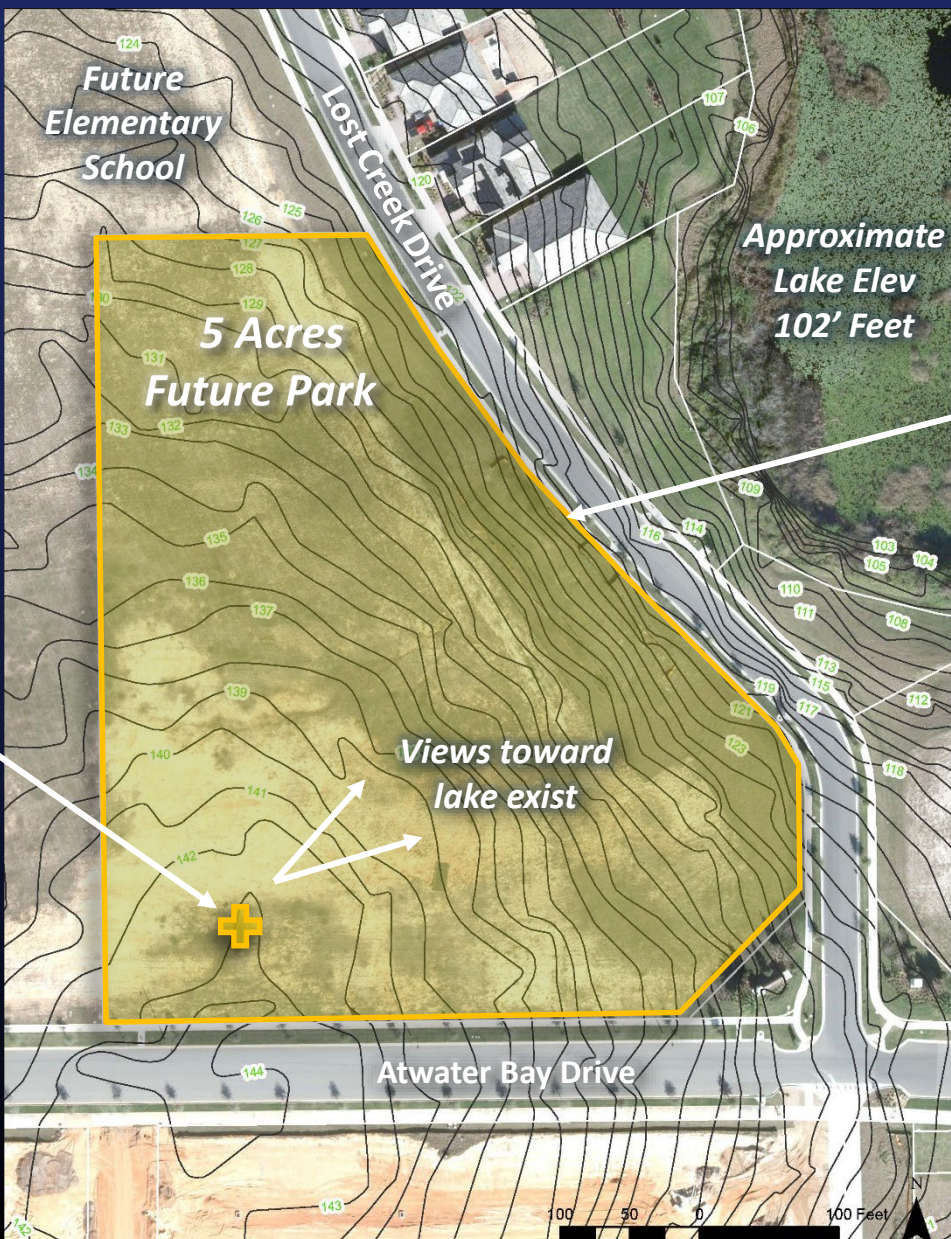


Site Overview – Site Close Up





Site Overview – Site Close Up



Future Elementary School

5 Acres Future Park

Approximate Lake Elev 102' Feet

This NE property line is approx. 122' elevation.

Approximate High Point at 142' Feet (40' feet difference to lake level.)

Views toward lake exist

100 50 0 100 Feet



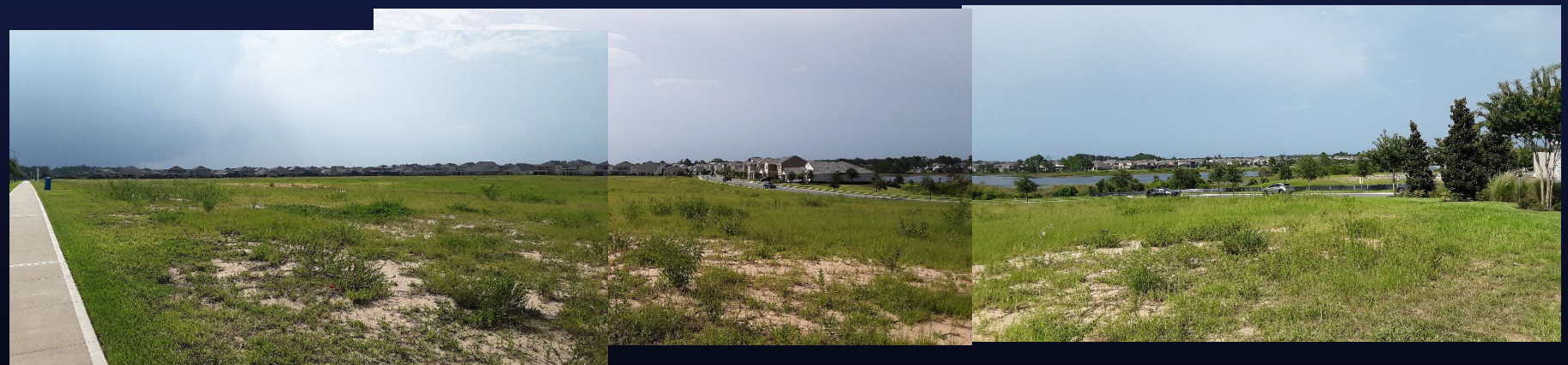
Site Overview – Site Pictures



Looking east towards park site



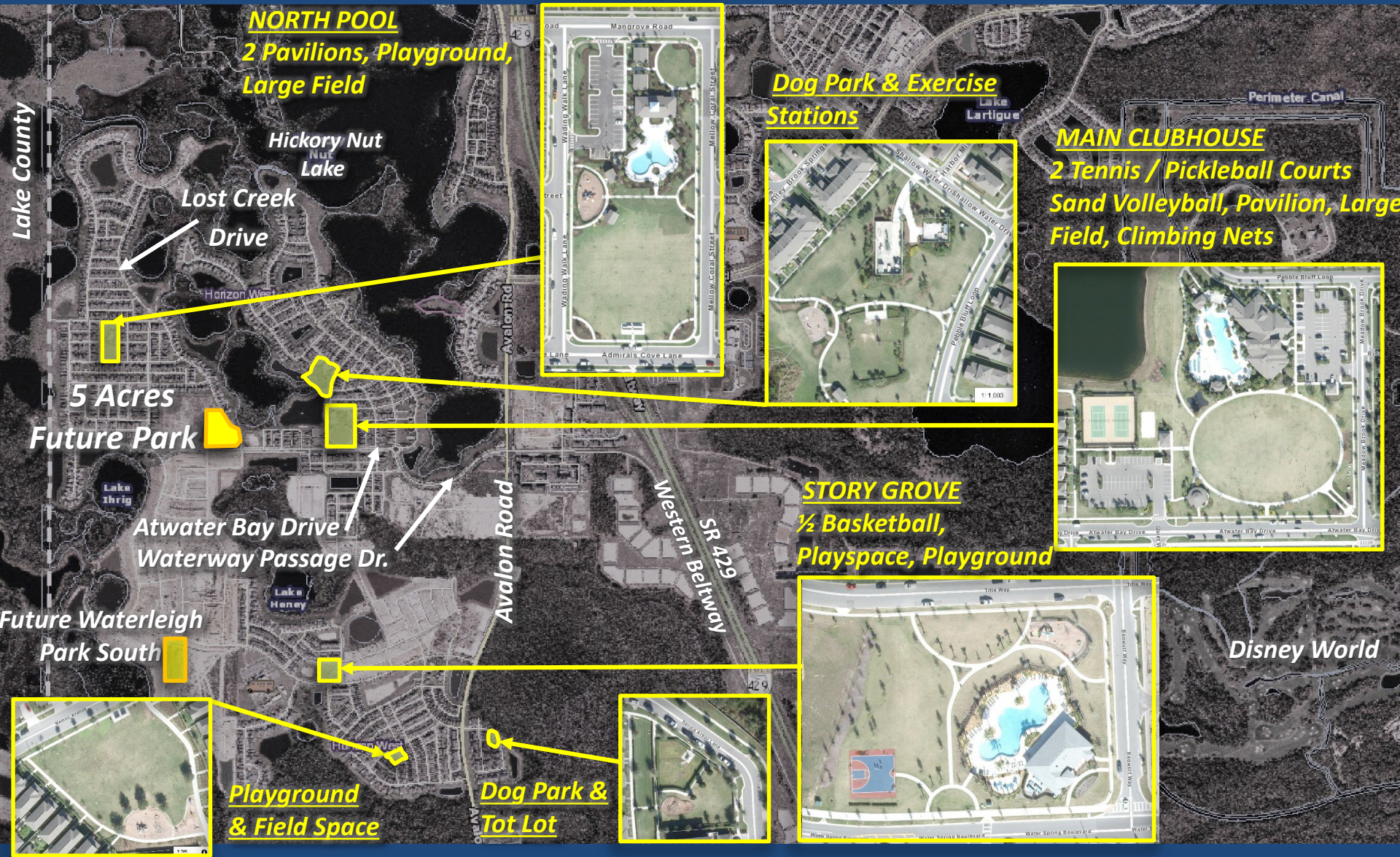
West view with the park site on the right



Wide open, modest sloping site towards lake – future school will be on left side of photo



Site Overview – Area Amenity Map





Recreation Amenities – Park Types

Orange County Parks and Recreation Master Plan:

- Pocket Park – 2 acres or less
- **Neighborhood Park – 2-19 acres (typically 5 acres)**
- Community Park – 20-149 acres (typically 50 acres)
- District Park – 150-500 acres
- Regional Park – 500 acres or more
- Specialty Park – Designed for one activity (i.e. Senior Center)



Community Meeting Agenda

- Introductions
- Site Overview
- **Recreation Amenities**
- Park Timeline
- Next Steps
- Questions & Comments

Potential Park Amenities



Playground

Potential Park Amenities



Picnic Pavilion

Potential Park Amenities



Shade Trees

Potential Park Amenities



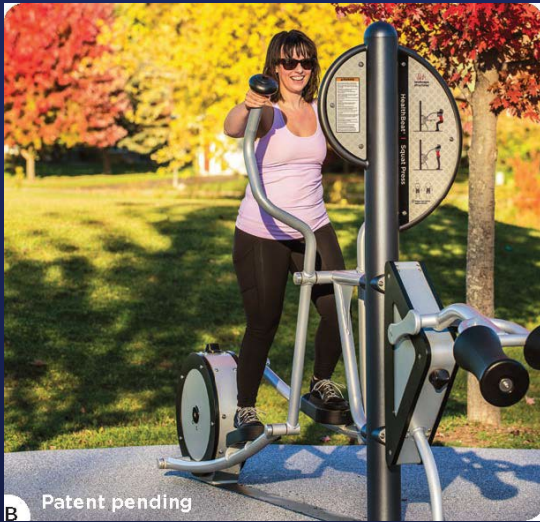
Paved Walking Paths

Potential Park Amenities



Large Open Field - Multipurpose

Potential Park Amenities



Fitness Area

Potential Park Amenities



Dog Park

Potential Park Amenities



Community Garden

Potential Park Amenities



Mini-Skate Park

Potential Park Amenities



Sand Volleyball

Potential Park Amenities



Basketball (half court)

Potential Park Amenities



Tennis Court

Incompatible Park Amenities



Splash Pads

Incompatible Park Amenities



Gym/Recreation Center

Incompatible Park Amenities



Athletic Fields (Lighted)

Incompatible Park Amenities

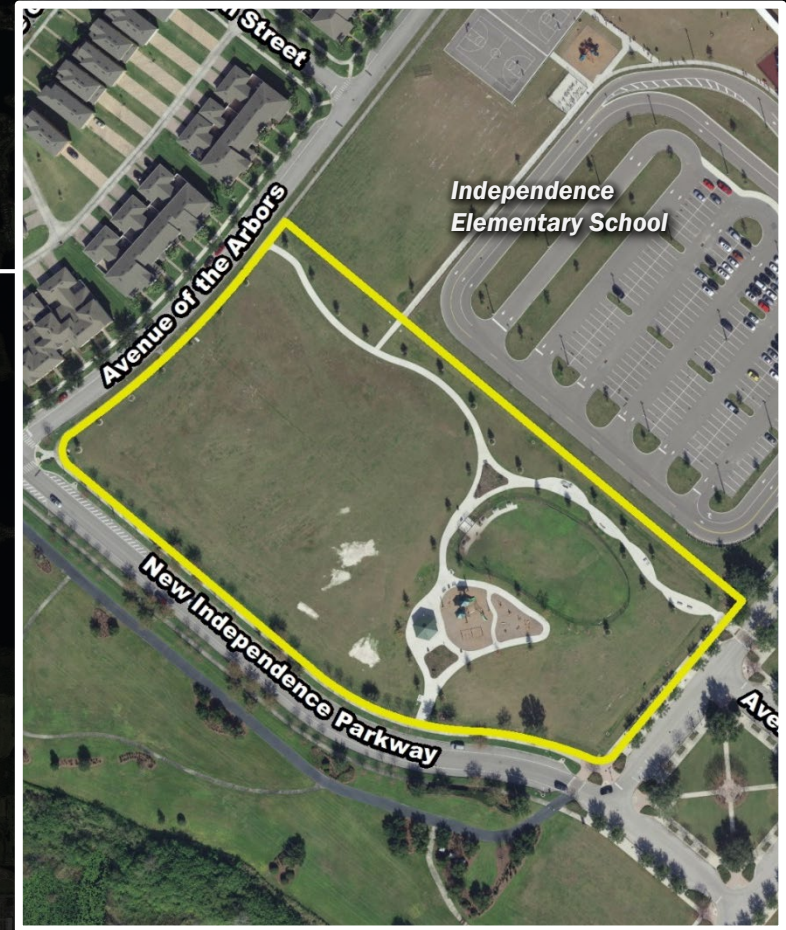


Swimming Pool

Independence Park



VILLAGE



- **Opened 2015**
- **5 Acres**
- **Dog park, playground, picnic tables, pavilion, benches, tot-lot, & open space**

Summerport Park

Independence
Elementary School



Park Entrance



Playground



Covered Playground



Picnic Area



Dog Park

- Opened 2012
- Bridgewater Crossing Boulevard
- 5.87 Acres
- Dog park, playground, picnic tables, pavilion, benches, tot-lot, & open space, community garden and fitness equipment.



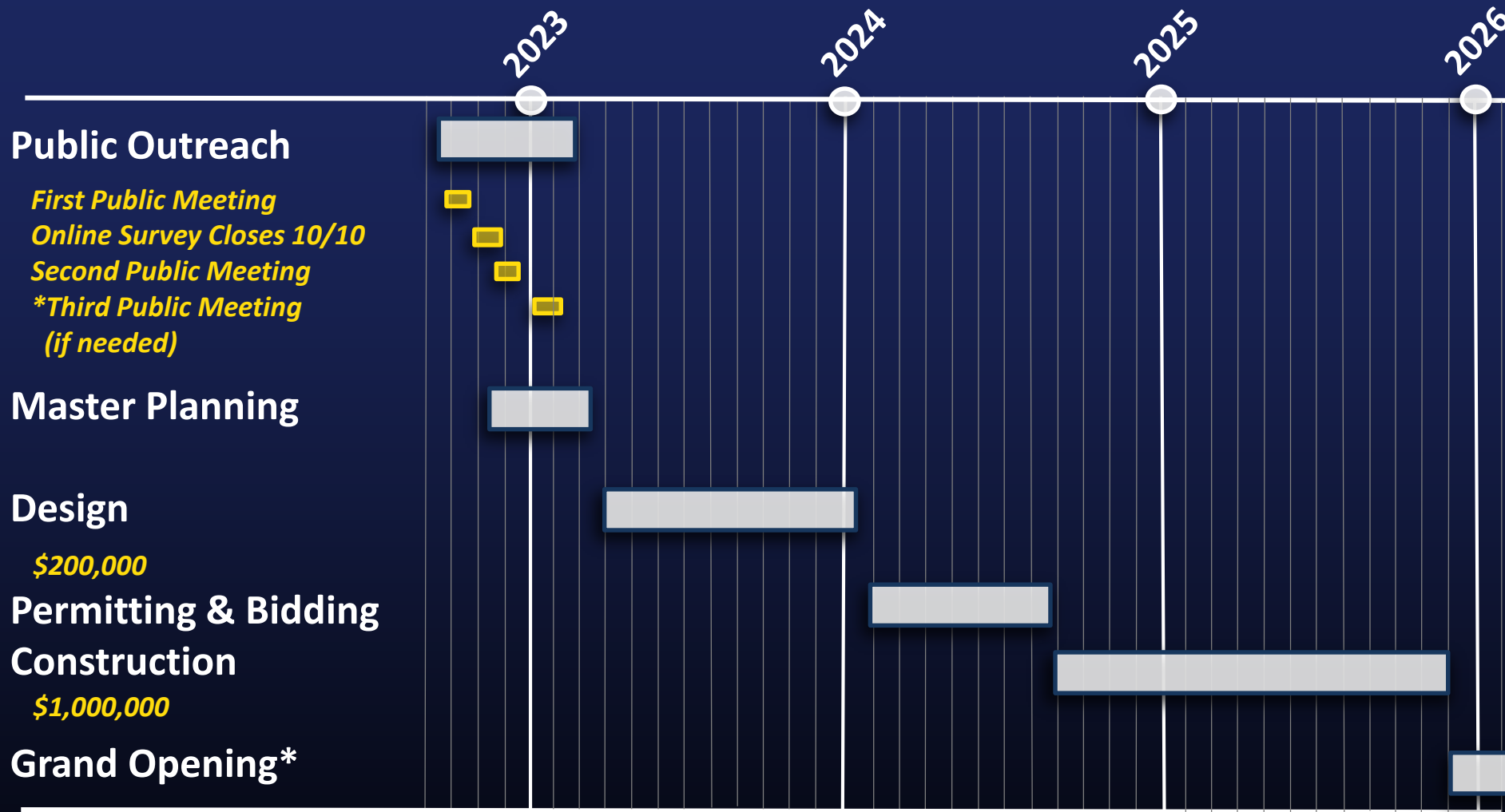


Community Meeting Agenda

- Introductions
- Site Overview
- Recreation Amenities
- **Park Timeline**
- Next Steps
- Questions & Comments



Planning & Development Timeline



* Park project timeline is subject to change. The grand opening is estimated.




Community Meeting Agenda


- Introductions
- Site Overview
- Recreation Amenities
- Park Timeline
- **Next Steps**
- Questions & Comments



Park Amenities Survey

www.surveymonkey.com/r/WaterleighPark



Waterleigh Neighborhood Park Amenities Survey

1. Where do you live? 

Street Address:

City:

Zip Code:

2. Please select the amenities listed below that you would like to see in the new park (amenities such as swimming pools, splash playgrounds, and recreation centers are not possible in neighborhood parks due to size of the property): 

Fitness area/exercise stations

Disc Golf (mini)

Paved walking path/sidewalk

Playground (ages 2-12)

Half Basketball Court

Tennis Court

Multipurpose Court (tennis court/pickleball)

Shade Trees

Picnic Pavilion

Picnic Table(s)

Community Garden

Dog Park

Volleyball (sand)

—

Multi-purpose field/open space

Other (please specify)

Survey closes October 10, 2022

Waterleigh Neighborhood Park

Next Meeting: November 30, 2022 @ 6pm

Waterleigh Clubhouse

16150 Pebble Bluff Loop

Winter Garden, FL 34787

Community Meeting

Orange County Parks & Recreation Division

September 21, 2022



Community Meeting Agenda

- Introductions
- Site Overview
- Recreation Amenities
- Park Timeline
- Next Steps
- **Questions & Comments**

Waterleigh Neighborhood Park

Questions?